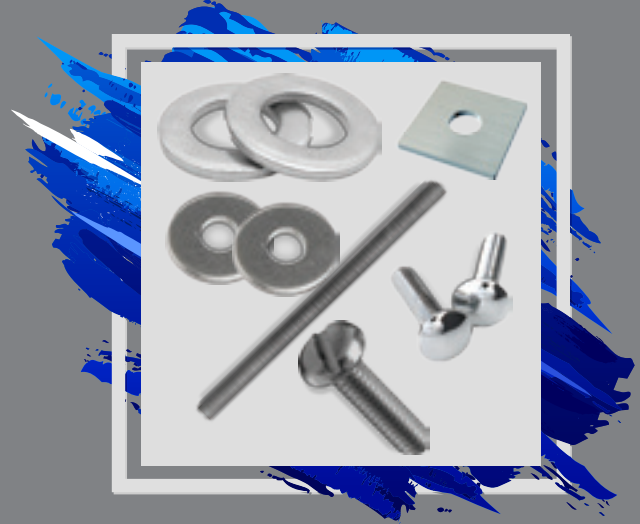


Piping Solutions

THREADED RODS, BOLTS, SPRING NUTS, NUTS



ASTM F436

Washers (SRW) | DIN 125 | ASTM F436

Zinc Plated	Stainless Steel	D	d	S
		(mm)	(mm)	(mm)
M6	M6	12	6.4	1.6
M8	M8	16	8.4	1.6
M10	M10	21	10.5	2
M12	M12	24	13	2.5
M16	M16	30	17	3
M18	M18	34	19	3.2
M20	M20	39	20.5	3.6



Order Example: SRW - M 12 -DIN 115

Round Washers DIN 440, DIN 9021

Washers (SRW) | DIN 440 | DIN 9021

DIN	Zinc Plated	Stainless Steel	D	d	S
			(mm)	(mm)	(mm)
440	M6		22	6.6	2
9021	M8	M8	24	8.4	2
9021	M10	M10	30	10.5	2.5
440	M12		45	13.5	4
9021	M12	M12	37	13	3
9021	M16	M16	50	17	3



Order Example: SRW - M 12 DIN 9021

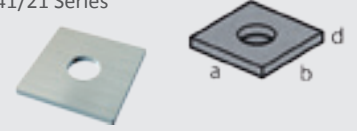
SUPPORTING SYSTEM

Square Washers SSW

Square Washers (SSW)

H.D. Galvanized Bolt	Stainless Steel Bolt	a x b x d
		(mm)
M8	M10	40 x 40 x (4-5-6)
M10	M12	40 x 40 x (4-5-6)
M12	M16	40 x 40 x (4-5-6)

SSW 40/40 for all channels
41/21 Series



SSW 41/41 for all channels
41/41 Series



Order Example: SSW 41/41 M 12 - d

Threaded Rod (STR) - DIN 975 - ASTM A36

Zinc Plated Thread	Length	Load cap.
	(mm)	(kN)
M6	2000/3000	2.2
M8	2000/3000	4.0
M10	2000/3000	6.4
M12	2000/3000	12.9
M16	2000/3000	17.3
M18	2000	22.0
M20	2000	27.0



Round Head Machine Screws

Round Head (SRH) | DIN 7985

Zinc Plated Thread	Length	d
	(mm)	(mm)
M6	30-40	6.0
M8	30-40	8.0
M10	20-60	10.0



SRH - M10 DIN 7985

SUPPORTING SYSTEM

Coupler Sleeves Rounded

Coupler Sleeves (SCS)

Electro-plated Thread	Stainless Steel Thread	D	L	Load Capacity
		(mm)	(mm)	(kN)
M6	M6	10/10	15	2.2
M8	M8	12/14	20	4.0
M10	M10	13/16	25	6.4
M12	M12	16/20	30	9.3
M16	M16	21/25	40	17.3
M20	M20	26/32	50	27.0



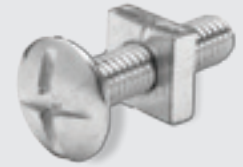
SCS - M16

Roofing Bolts

Roofing Bolts (SRB)

- Materials : low carbon steel , carbon steel
- Steel S235 , grade 4.6 , 4.8 and 8.8
- Surfaces : plain , black and zinc plated
- Length = X (mm) – Y (mm)

Thread Size	M4 x - y	M5 x - y	M6 x - y	M8 x - y
	(mm)	(mm)	(mm)	(mm)
Length	10 - 50	10 - 80	12 - 120	16 - 150



Order Example: SRB - M6

Carriage Bolts with Nut Below Head DIN 603

Carriage Bolts (STC)

Zinc Plated	H.D. Galvanized Grade 4.6	Head	Head	Square Width	Square Depth
(E)	(E)	(A) mm	(H) mm	(O) mm	(P) mm
M5	M5	12.0	3.0	5.0	3.2
M6	M6	15.1	3.70	6.40	4.0
M8	M8	18.3	4.50	8.23	4.75
M10	M10	21.44	5.30	9.86	5.56
M16	M16	34.14	8.74	16.3	8.74



Order Example: STC - M6

SUPPORTING SYSTEM

Hexagon Nuts DIN 934, DIN EN 24032, ASTM A 563

Hexagon nut (SHN) | DIN 934 or ISO 4032 (= DIN EN 24032) | ASTM A563

Zinc Plated Thread	Stainless Steel Thread	S/m DIN	S/m ISO	e
		(mm)	(mm)	(mm)
M6	M6	10/5	10/6	11.5
M8	M8	13/6.5	13/7.5	15.0
M10	M10	17/8	16/9.5	19.6
M12	M12	19/10	18/12	21.9
M16	M16	24/13	24/15.5	27.7
M18	M18	26/16	26/16	22.0
M20	M20	30/18	29/20.5	27.0



Order Example: SHN - M12

Hexagonal Rod Coupler Grade 8.8 ASTM a 563

Hexagonal Rod Coupler with view hole (SHR)

Electroplated Thread	Stainless Steel Thread	D	L	Load capacity
		(mm)	(mm)	(kN)
M10	M10	13	40	6.4
M12	M12	17	40	9.3
M16	M16	22	50	17.3
M 18	M 18	23	60	22.0
M 20	M 20	25	70	27.0



Order Example: HRC - GV - M 12

SUPPORTING SYSTEM

DIN 933, DIN 24017, ASTM A307, A449

Hex Head Bolt (SHB) | DIN 933 or EN 24017 ASTM A307, A449 (without nut)

Zinc Plated Dimension	Stainless Steel Dimension	S DIN	S EN
		(mm)	(mm)
M 6 x 12		10	10
M 6 x 25			
M 8 x 25	M 8 x 25	13	13
M 8 x 40			
M 10 x 20		17	16
M 10 x 30	M 10 x 30		
M 10 x 45	M 10 x 45		
M 10 x 60			
M 10 x 70			
M 12 x 22		19	18
M 12 x 25	M 12 x 25		
M 12 x 30	M 12 x 30		
M 12 x 40	M 12 x 40		
M 12 x 50			
M 12 x 60	M 12 x 60		
M 12 x 80	M 12 x 80		
M 12 x 90			
M 16 x 40	M 16 x 40	24	24
M 16 x 60	M 16 x 60		
M 16 x 90	M 16 x 90		
M 18 x 40	M 18 x 40	27	26
M 18 x 50	M 18 x 50		
M 18 x 60	M 18 x 60		
M 18 x 80	M 18 x 80		
M 20 x 40	M 20 x 40	32	32
M 20 x 50	M 20 x 50		
M 20 x 60	M 20 x 60		
M 20 x 80	M 20 x 80		



LOCATION

Al Waab City – Salwa Road, 1st Floor, Office No.A, Above HSBC Bank
P.O. Box: 23910 Doha-Qatar
Phone: Tel : +974 4451 3301/02/03
Fax: +974 4451 3305
Email: contact@unitech-qatar.com

